



2024

NEXGEN AUTO TRANSPORT

THE ULTIMATE GUIDE TO HOW TO SHIP A CAR

At NexGen Auto Transport, we simplify car shipping. Whether you're relocating, buying a car out of state, or need specialized transport for a luxury vehicle, we offer tailored solutions for every scenario. Our commitment to transparency, reliability, and customer satisfaction makes us a trusted name in the auto transport industry. This guide will walk you through the car shipping process, from understanding your options to preparing your vehicle for transport. We'll also provide estimated costs for popular routes and tips to save money.





Section 1: How Car Shipping Works

Types of Car Shipping

1. Open Transport

- Overview: The most common and economical method.
- Best For: Standard vehicles, including sedans, SUVs, and trucks.
- Considerations: Vehicles are exposed to weather and road debris, but damage is rare (less than 1%).

2. Enclosed Transport

- Overview: Offers maximum protection in a fully enclosed trailer.
- Best For: Classic, luxury, or exotic cars.
- Considerations: 40–60% more expensive, but ideal for high-value vehicles.

Door-to-Door vs. Terminal-to-Terminal Shipping

• Door-to-Door:

- The driver picks up and delivers the vehicle as close to your address as legally and safely possible.
- **Pros:** Convenience, minimal travel for you.
- **Cons:** Slightly higher cost for remote areas.

• Terminal-to-Terminal:

- Drop off and pick up your vehicle at designated terminals.
- **Pros:** Lower cost.
- **Cons:** May require travel to and from terminals; additional storage fees if the vehicle is left at a terminal.



Factors Influencing Shipping Costs:

Factor	Description	Impact
Distance	Longer routes generally cost more, but cost-per-mile decreases.	Major cities are more cost-effective.
Vehicle Size & Weight	Larger vehicles (trucks, SUVs) incur higher fees.	Compact cars cost less to ship.
Seasonality	Peak seasons (summer) see higher demand and rates.	Off-peak (winter) is cheaper.
Vehicle Condition	Non-operational vehicles require special equipment.	Adds ~\$100-\$200.
Transport Type	Enclosed trailers offer more protection but cost more.	Adds 40-60% to base rate.

Factors Influencing Shipping Costs by Season:

Factor	Description	Impact in Peak Season (Summer)	Impact in Off-Peak Season (Winter)
Distance	Longer routes increase costs but lower cost per mile.	Slightly higher due to demand.	Lower rates as demand decreases.
Vehicle Size/Weight	Larger vehicles (SUVs, trucks) cost more to transport.	Moderate increase due to truck space demand.	Smaller increase, more truck space available.
Transport Type	Open vs. Enclosed shipping.	40-60% higher for enclosed.	40-60% higher but more flexible availability.
Pick-Up/Delivery Location	Remote or rural areas add costs.	Increased delays and costs due to limited truck availability.	Lower impact: more flexibility for carriers.
Seasonality	Peak season (summer) vs. off-peak (winter).	Higher rates due to high demand.	Reduced rates; promotions available.
Fuel Costs	Fluctuates with market conditions.	Higher impact if fuel prices spike in summer.	Lesser impact; lower fuel demand.
Vehicle Condition	Non-operational vehicles require extra equipment.	+\$100-\$200	+\$100-\$200
Time Sensitivity	Expedited shipping demands.	Premium fees for urgent shipments.	More flexibility, lower premium fees.



SECTION 2:

Cost Estimation for Popular Routes: Here's an estimate of shipping costs for frequently traveled routes:

Route	Distance (Miles)	Open Transport	Enclosed Transport
Los Angeles, CA → Houston, TX	1,550	\$950	\$1,425
New York, NY → Miami, FL	1,280	\$875	\$1,310
Chicago, IL → Phoenix, AZ	1,750	\$1,050	\$1,575
Seattle, WA → Denver, CO	1,300	\$900	\$1,350
Atlanta, GA → Dallas, TX	800	\$600	\$900
San Francisco, CA → Las Vegas, NV	570	\$525	\$785
Boston, MA → Charlotte, NC	900	\$650	\$975
Washington, DC → Orlando, FL	860	\$625	\$950
Detroit, MI → Atlanta, GA	725	\$575	\$860
Minneapolis, MN → Miami, FL	1,700	\$1,100	\$1,650
Denver, CO → Chicago, IL	1,000	\$750	\$1,125
Phoenix, AZ → San Diego, CA	350	\$450	\$675
Miami, FL → Houston, TX	1,200	\$825	\$1,240
Nashville, TN → Los Angeles, CA	2,000	\$1,200	\$1,800
Portland, OR → Salt Lake City, UT	765	\$575	\$860

Notes:

- Prices are estimates and can vary based on fuel prices, seasonality, and demand.
- Discounts may apply for flexible scheduling or terminal-to-terminal transport.
- Enclosed transport provides added protection but at a premium.



SECTION 3: THE CAR SHIPPING PROCESS

Phase 1: Vehicle Pickup

- **Estimated Pickup Window:** 2-5 business days.
- **Preparation Checklist:**
 - a. Wash your vehicle to ensure accurate inspection.
 - b. Document the car's condition (photos of all sides).
 - c. Remove personal belongings (limit: 100 lbs in the trunk).
 - d. Ensure the gas tank is at 1/4 full.
- **Pickup Day:** The driver will inspect the vehicle with you, complete a vehicle condition report, and load the car onto the trailer.

Phase 2: Transit

- **Transit Time:** 1-7 days, depending on distance and route complexity.
- **Real-Time Updates:** You'll receive periodic updates from our team, and you can contact us anytime for status inquiries.
- **Factors Affecting Transit Time:**
 - a. **Route Conditions:** Weather, traffic, and road closures.
 - b. **Vehicle Type:** Oversized vehicles may require special handling.

Phase 3: Delivery

- **Pre-Delivery Notification:** We provide 24-hour and 1-2 hour delivery windows.
- **Delivery Day:**
 - a. Inspect the vehicle for damage.
 - b. Compare its condition with the initial report.
 - c. Sign off to confirm receipt and completion of delivery.



SECTION 4: MONEY-SAVING TIPS

- **Book Early:** Last-minute bookings can incur premium fees.
- **Opt for Open Transport:** Unless protection is critical, open transport saves 40–60%.
- **Flexible Scheduling:** Allow a wider window for pickup and delivery to get better rates.
- **Major Hubs:** If possible, arrange pickup and delivery near major cities or highways.
- **Off-Peak Shipping:** Winter months often have lower rates.





SECTION 5: FREQUENTLY ASKED QUESTIONS

Is my vehicle insured during transport?

Yes, all carriers provide cargo insurance covering vehicle damage. For added security, ensure your personal auto insurance is active.

Can I track my vehicle during transit?

While we don't offer GPS tracking, our team provides regular updates on your vehicle's status.

What if my vehicle gets damaged?

Less than 1% of shipments encounter damage. If damage occurs, our claims team will guide you through the resolution process.

Can I ship a non-operational vehicle?

Yes, but it requires a winch for loading, which adds \$100-\$200 to the cost.

Do you offer discounts?

Yes! Discounts are available for military personnel, students, and repeat customers. Contact us for eligibility.





WHY CHOOSE NEXGEN AUTO TRANSPORT?

Here's why we stand out:

- **Affordable Rates:** We offer competitive pricing without compromising on service.
- **Reliable Delivery:** Punctuality is our promise. We deliver your vehicle on time, every time.
- **Customer-Centric Service:** Your satisfaction is our priority. We keep you informed every step of the way.
- **Fully Insured:** Your vehicle is protected throughout the entire transport journey.



HOW TO PREPARE YOUR VEHICLE FOR TRANSPORT?

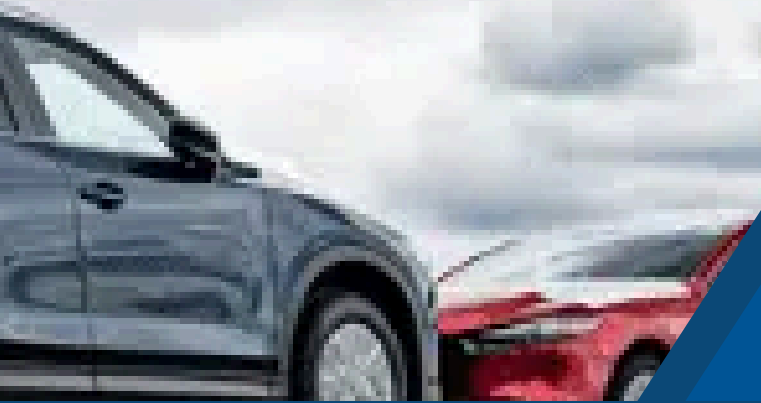
- **Clean Your Vehicle:** This helps in documenting the vehicle's condition.
- **Remove Personal Items:** To prevent damage or loss, ensure no personal items are left inside.
- **Inspect for Damage:** Take photos of your car from multiple angles before shipment.
- **Ensure Low Fuel Levels:** Keep your fuel tank at about $\frac{1}{4}$ full to reduce weight.





CLIENT TESTIMONIALS

- **Katherine Jenks:** Praised the seamless transport of two motorcycles from Texas to New Hampshire, appreciating the attentive service and updates throughout the process.
- **Srikanth Kunduri:** Highlighted the fast service, with a Tesla shipped from Houston to Phoenix in just four days.
- **Robert Terrell:** Shared a smooth experience with delivery from Tucson, AZ, to Houston, TX, within two days.
- **Saqlain Akhtar Jeelani:** Complimented the company's responsiveness and professionalism, specifically mentioning Leo for his quick and polite service.
- **Craig T.:** Described the experience as "awesome," recommending NexGen for their attentive and accommodating approach.
- **Jenny Elizabeth Mathurin:** Appreciated the affordable pricing paired with great service.
- **Richard Haas:** Acknowledged the reliability and excellent communication provided during his car shipment, noting the team's availability even after hours.
- **Octavio Flores:** Successfully transported seven trucks from Utah to Texas, highlighting the good price and excellent service.
- **Mousa Alkiswani:** Recognized the company's punctuality and effective communication.
- **Mo Izh4n:** Commended the quick response and same-day pickup, making the transport process stress-free.



CONTACT US



+832-886-1321

www.nexgenautotransport.com

contact@nexgenautotransport.com

3945 Greenbriar Dr ste b 1, Stafford, TX
77477, United States